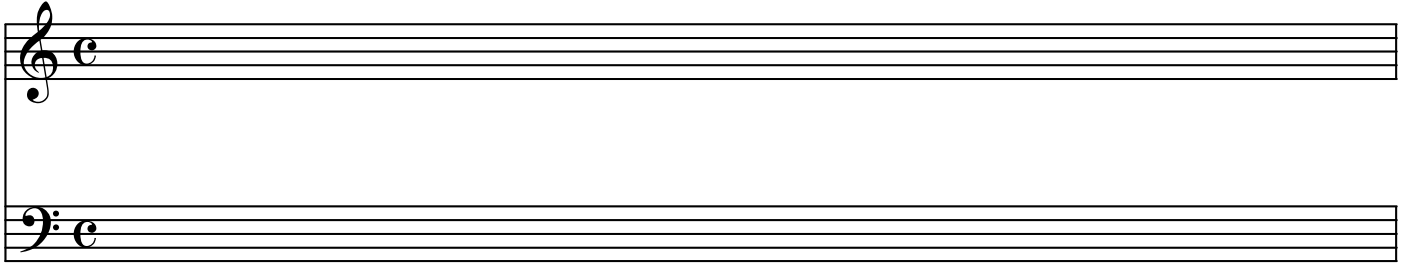
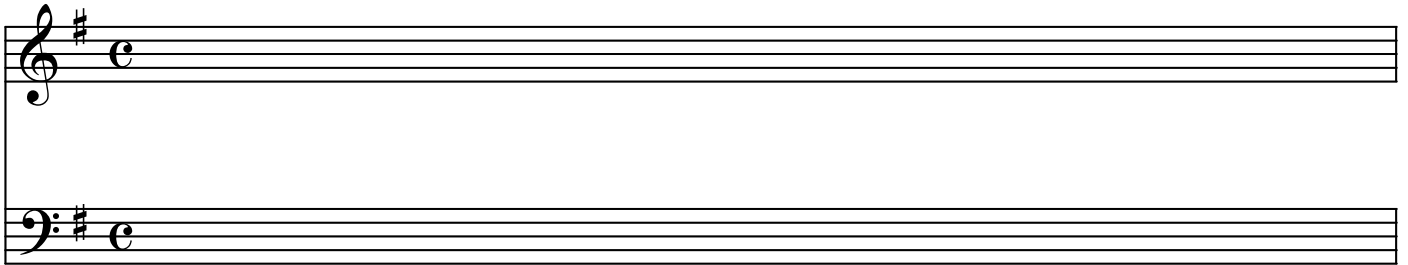


# Key Signatures (pg 1)

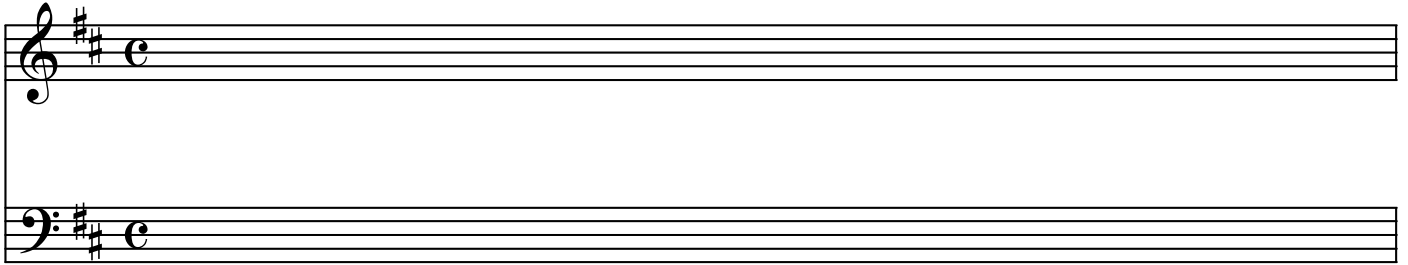
C major or A minor (No sharp/flat)



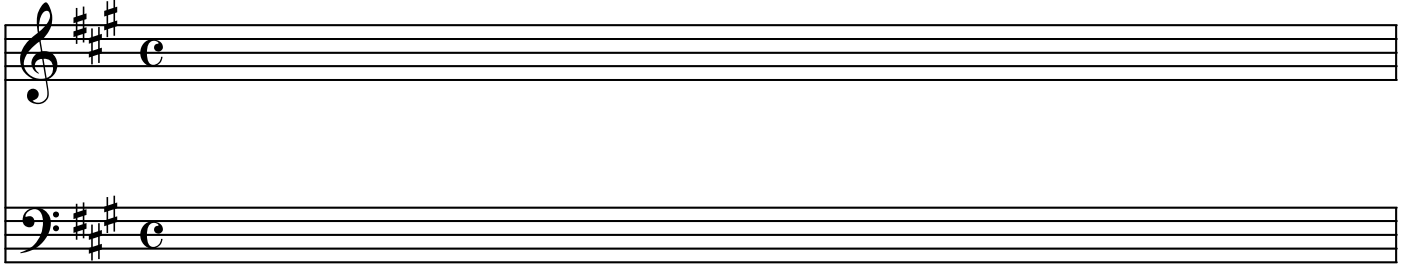
2. G major or E minor (F sharps)



D major or B minor (F sharps and C sharps)

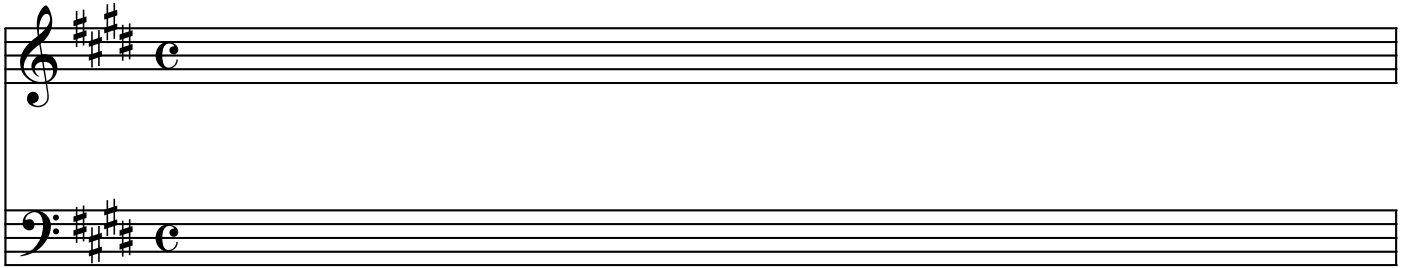


A major or F# minor (F sharps, C sharps, and G sharps)

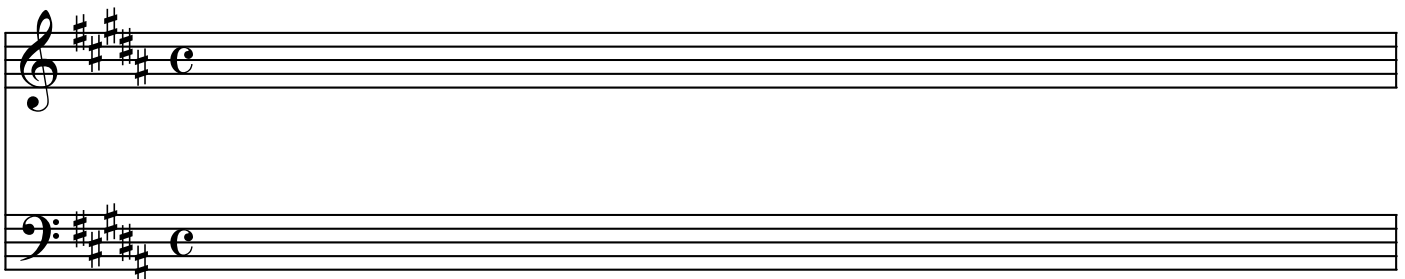


# Key Signatures (pg 2)

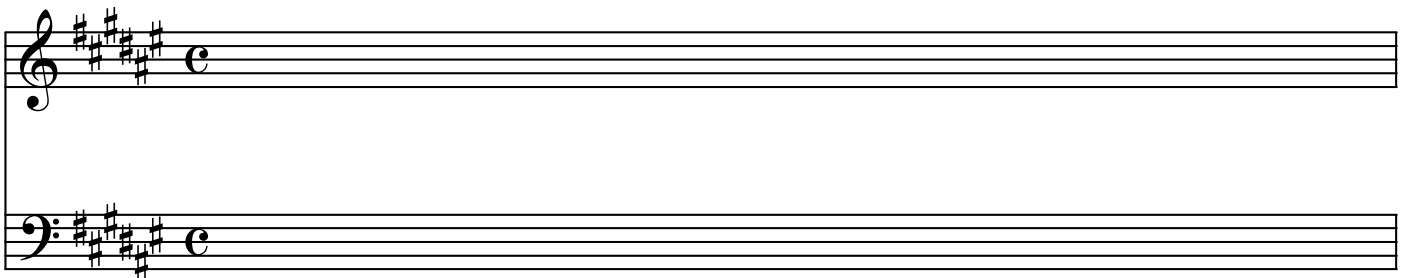
E major or C# minor (F sharps, C sharps, G sharps, D sharps)



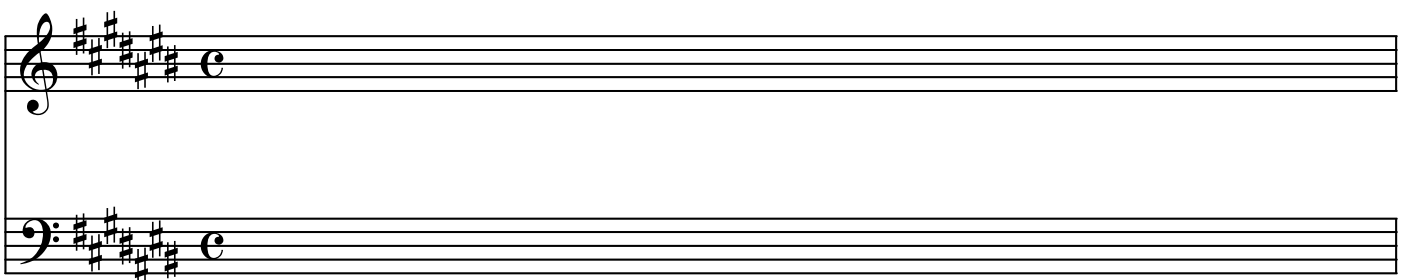
B major or G# minor (F sharps, C sharps, G sharps, D sharps, A sharps)



F# major or D# minor (F sharps, C sharps, G sharps, D sharps, A sharps, E sharps)



C# major or A# minor (F sharps, C sharps, G sharps, D sharps, A sharps, E sharps, B sharps)



# Key Signatures (pg 3)

F major or D minor

Two musical staves for F major or D minor. The top staff is in treble clef and the bottom staff is in bass clef. Both staves have a key signature of one flat (Bb) and a common time signature (C). The first note on each staff is a half note C.

Bb major or G minor

Two musical staves for Bb major or G minor. The top staff is in treble clef and the bottom staff is in bass clef. Both staves have a key signature of two flats (Bb, Eb) and a common time signature (C). The first note on each staff is a half note C.

Eb major or C minor

Two musical staves for Eb major or C minor. The top staff is in treble clef and the bottom staff is in bass clef. Both staves have a key signature of three flats (Bb, Eb, Ab) and a common time signature (C). The first note on each staff is a half note C.

Ab major or F minor

Two musical staves for Ab major or F minor. The top staff is in treble clef and the bottom staff is in bass clef. Both staves have a key signature of four flats (Bb, Eb, Ab, Db) and a common time signature (C). The first note on each staff is a half note C.

# Key Signatures (pg 4)

Db major or Bb minor

Musical notation for the key signature of Db major or Bb minor. It consists of two staves: a treble clef staff and a bass clef staff. Both staves begin with a common time signature 'C' followed by a key signature of three flats (Bb, Eb, Ab).

Gb major or Eb minor

Musical notation for the key signature of Gb major or Eb minor. It consists of two staves: a treble clef staff and a bass clef staff. Both staves begin with a common time signature 'C' followed by a key signature of four flats (Bb, Eb, Ab, Db).

Cb major or Ab minor

Musical notation for the key signature of Cb major or Ab minor. It consists of two staves: a treble clef staff and a bass clef staff. Both staves begin with a common time signature 'C' followed by a key signature of five flats (Bb, Eb, Ab, Db, Gb).